

# ClipTool™ Pro

As broadcasters increasingly utilize media servers at the core of their operations, there is a growing need for smart, intuitive utilities for controlling server functions and managing media files contained within the system. To meet this need, Omneon offers a suite of MediaTools that provide simple and cost-effective, yet powerful, functionality. The Omneon ClipTool Pro is a Windows-based software application that provides an easy-to-use graphical user interface to monitor and control playout and record functionality for an Omneon Spectrum™ media server. With a VTR-like control panel, ClipTool Pro provides powerful control for ingest, quality assurance and playout operations. Written directly to Omneon APIs, ClipTool Pro provides agile, precise manual record and playout control.

## INTUITIVE OPERATIONS

ClipTool Pro provides basic and advanced functionality ranging from displaying a listing of clips to “crash record” capability. ClipTool Pro was designed to make it easy for broadcasters to manage manual interaction with their Spectrum media server and includes the following capabilities:

### Sub Clipping

Creating new partial clips and throwing away unwanted tops and tails has never been easier. A copy clip function creates sub clips from manually selected in and out points. Variable length handles can be adjusted to allow for in and out point trimming in the future. The original clip can then be deleted, freeing up storage on the media server.

### Merge Timeline

This feature allows users to take several small clips located in a timeline, and merge them into a single, larger clip. Users can effectively use ClipTool Pro to perform a cuts-only edit on these pieces of material.

### Jog/Shuttle

The jog and shuttle capabilities enable quick movement through a clip, making it easier to find specific frames for marking in and out points. Simple, on-screen buttons allow users to move forwards and backwards through material to help them quickly identify precise segments for playout.

### Crash Record

The instant crash record feature streamlines the manual ingest process and allows for a fast response when needed to record incoming material. Automatic naming of files in this mode allows for multiple open-ended records in rapid succession.

### Loop Record

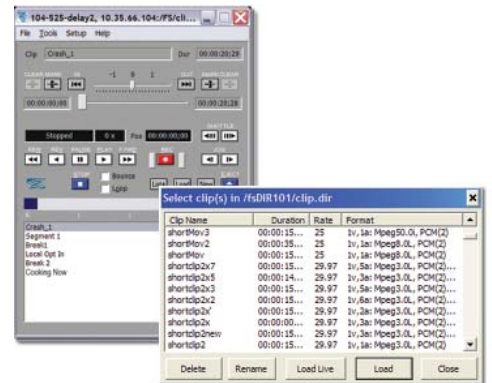
Operators can use ClipTool Pro to designate a section of disk storage for loop recording. Upon command, the system would start recording at the beginning of the designated storage section, continue to the end, and then loop back to the beginning, overwriting what had originally been recorded in that section.

### Multiple Playback Modes

Bounce mode and standard loop mode allow product shots, bumpers and graphics elements to fill timeslots as needed.

### Storage Availability Gauge

When manually ingesting material, particularly with open-ended edits, it is critical to know how much record capacity remains available on the media server. The storage availability gauge is always displayed prominently in the user interface to keep users informed of the amount of record time remaining.



## › BENEFITS

- A powerful yet simple user interface for ingest, quality assurance, and playout
- An easy to learn and use tool for controlling the multi-channel Omneon Spectrum media server
- Provides agile control of record and playout combined with useful file management features

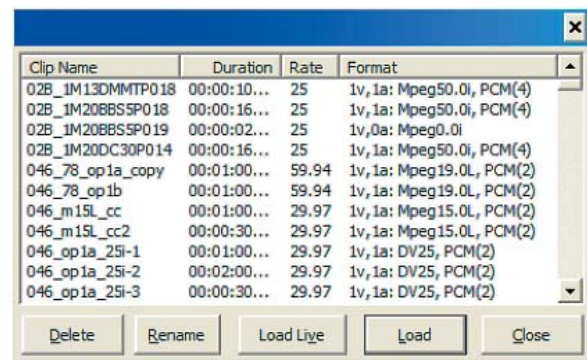
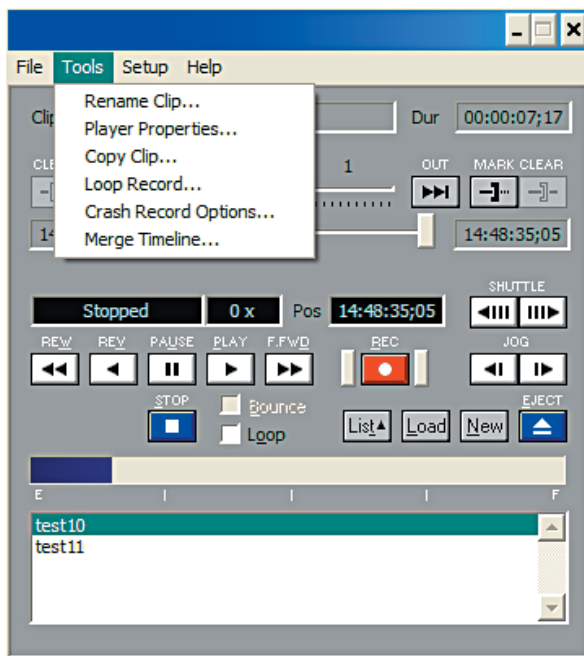
› Find More Online

<http://www.omneon.com/products>

## Omneon ClipTool Pro

| List Management Tools |   |
|-----------------------|---|
| <b>Clip List Sort</b> | Allows the clip list to be sorted by the user on any of the available fields.   |
| <b>Rename Clip</b>    | Users can rename the current clip or a clip in the list.  |
| <b>Copy Clip</b>      | Allows the user to copy clips between marks on the timeline. This feature creates new copies of the sub-clipped material and allow the user to specify a new sub-clip name. |

### WINDOWS-LIKE GRAPHICAL USER INTERFACE



ClipTool Pro combined with other Omneon MediaTools such as MigrateTool™ and TrackTool™, can help you get the most out of your Omneon Spectrum media server. For additional information on all Omneon MediaTools, visit us on the web at: <http://www.omneon.com/products/mediatools.html>.



[www.omneon.com](http://www.omneon.com)

**US Headquarters:**

965 Stewart Drive  
Sunnyvale, CA 94085  
ph +1 866.861.5690  
ph +1 408.585.5000  
fx +1 408.585.5099

**Europe:**

5 Lindenwood  
Chineham, Basingstoke  
RG24 8QY United Kingdom  
ph +44 1256.347.400  
fx +44 1256.347.410

**Omneon Video Networks, K.K.:**

Ginza San-Chome Bldg. 8F  
3-14-1 Ginza, Chuo-ku  
Tokyo 104-0061 Japan  
ph +81 03.5565.6735  
fx +81 03.5565.6736

**Asia/Pacific:**

20 Loyang Crescent  
Singapore 508984  
ph +65 6548.0500  
fx +65 6548.0504